

# FORSETI

## SHOWER RAIL AND MIXER SET

### Features

Ahti Interiors commits to providing sustainable solutions where possible. This product water flow is limited to 9L/min

#### Mixer Tap

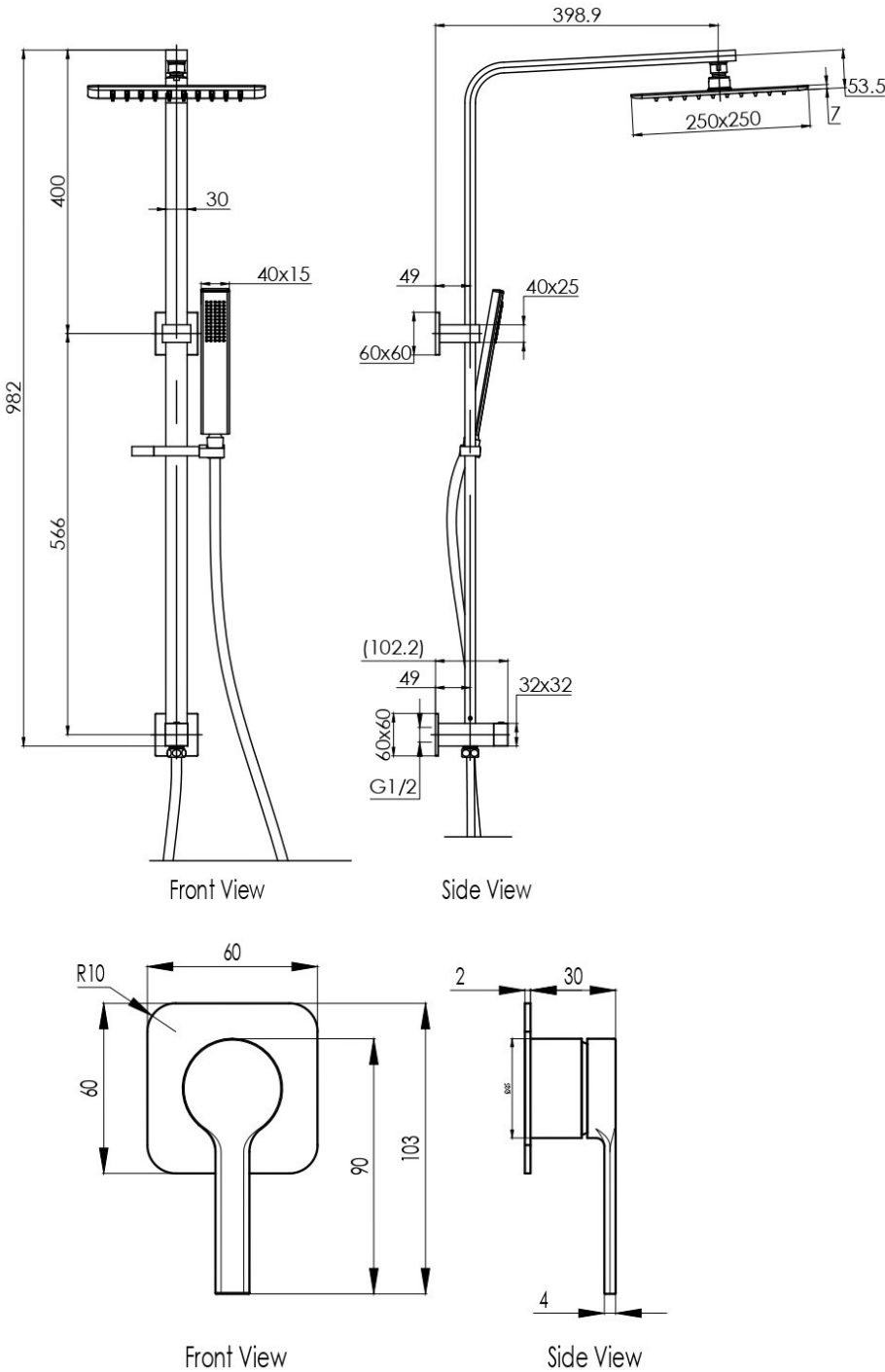
- 25mm Cartridge with European Technology
- Cold Start Technology (Energy Saving)
- Brass Construction
- 9L/min Water Saving Flow Technology
- Coloured Hot and Cold Indicators
- Designed in London, UK

#### Shower Head

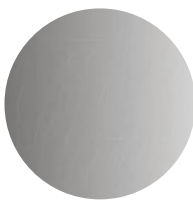
- Ultra Thin Shower Head 250mm.
- Shower Head from Lead Free Stainless Steel 304
- Easy to Clean TPR Nozzles.
- Brass Swivel Joint Female 1/2" Inlet.

#### Shower Handle

- Single Function Brass Shower Handle
- Integrated Water Inlet and Diverter
- Slider to Adjust Height
- 1.5 meter PVC Hose



### Available in



Chrome  
Electroplated  
**F01-FSS01C**



Brushed Gold  
PVD  
**F01-FSS01G**



Matte Black  
Electroplated  
**F01-FSS01B**

**Note:** This product has a visible Ahti logo

### Cleaning & Care

- All surfaces should be cleaned with mild liquid detergent or soap and water.
- Do not use cream cleaners or citrus based cleaning products, as they are abrasive.
- Use of unsuitable cleaning agents may damage the surface.
- Any damage caused in this way will not be covered by warranty.
- Please visit [www.ahtiinteriors.com/warranty](http://www.ahtiinteriors.com/warranty) to view the full warranty

Ahti Interiors reserves the right to make modifications without prior notice. Physical colour may differ from the image shown. Always use physical product measurements for mark-ups and roughing in as line the line drawing shown may differ from actual product received. All measurements are shown in millimetres.